

Quick start Guide

CRTAMAX



Hypervideo

1.3.0.0

Freeware



(c) 2021 CrtaMax (V.K-J)

HTML-Video-Player & Link-Manager

Just-in-time hypertext generator
iFramer for local files, network and cloud video

Just an example

As an introduction, it is advisable to open the intro (LP) to get a first glimpse.



Here we go

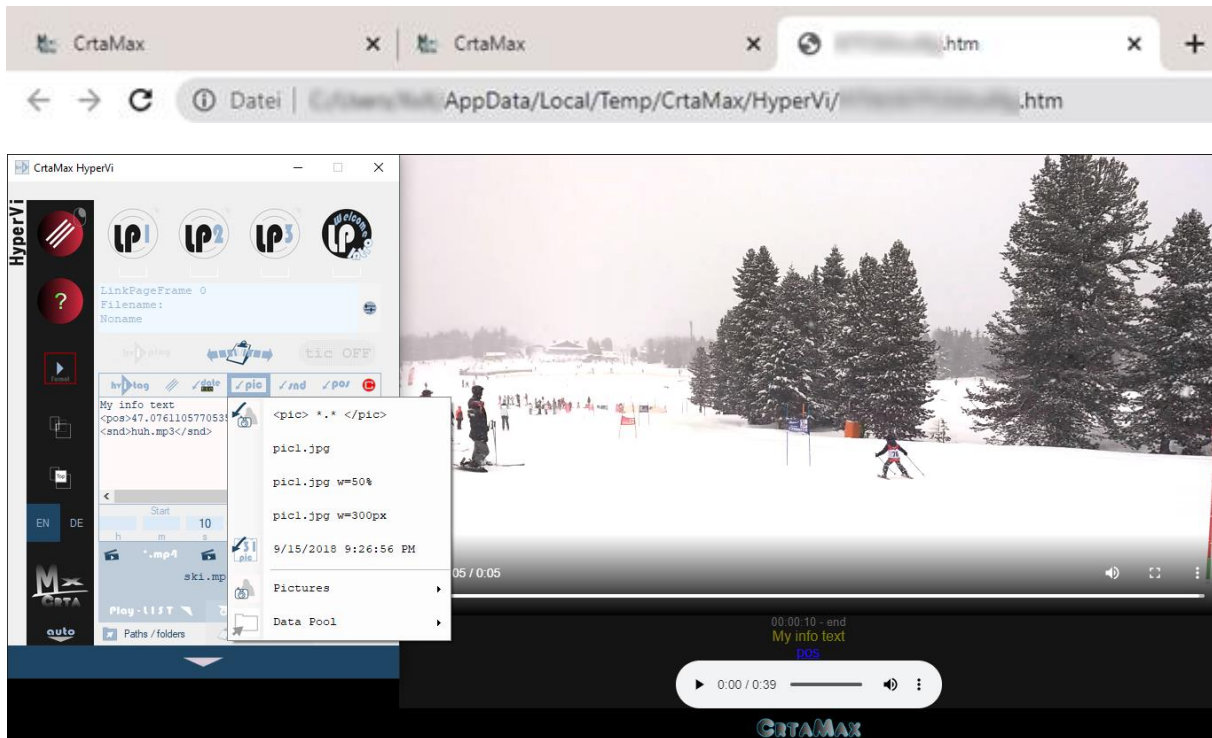
Choose the language and go online because the videos in the intro are streamed from the internet.



HVi + web browser



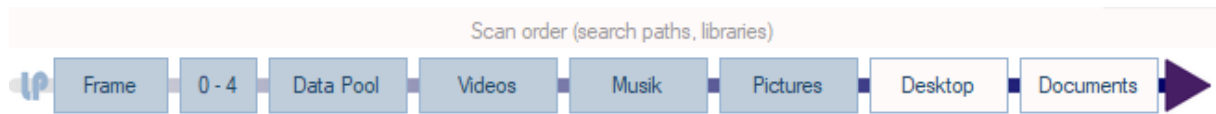
Do you have videos on mass - stored locally or shared and published in the cloud? Bring your videos that have been released or freely accessible to you in a clear and self-documented manner on a local just-in-time generated website! Create LinkPages (LPs) and share them with friends and family, or just organize private inventory without internet access. With HVi the web browser is all the more given the central role. You can watch videos in familiar surroundings and open any number of tabs with additional videos. In the tabs, combine several videos in combination from different sources in collections and add a personal touch. A modern web browser of your choice should be installed.



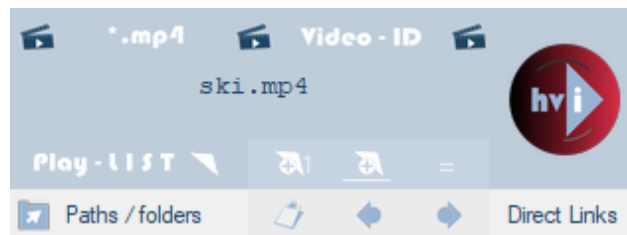
HVi is literally a "home" page manager. It generates HTML files locally and just-in-time, in which it embeds videos - whether locally or streamed from the Internet. It can be operated permanently offline or in the home network. Arrangements of text, video links and collections can be organized and documented in LPs (link pages). In addition, play and loading lists are supported.

Video-ID (*.mp4)

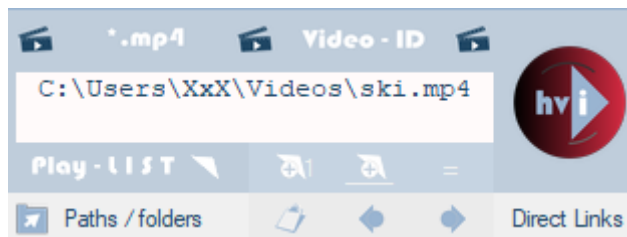
HVi enables relative access to paths and folders in the Windows file system. Drag and drop the video file (*.mp4) into the window or just enter the file name (video ID) directly. HVi relativizes the absolute paths using the integrated library function, in which the references are derived from switchable areas and folders.



Depending on the setting, HVi searches for the files in the library folders and all subfolders in a specified order. If it finds one, it enters the formatted file in the video ID text field. If it does not find the file, the field remains white as a highlighted feature. The search starts in the LP folder and its subfolders, then in the LPs of frames 0-4, etc. If the file is subsequently found, the subsequent areas are not searched further.



relative



absolutely

Likewise, any file that was passed via drag & drop or path copy with full path but is not part of the library gets the white attribute - although the file exists.

Avoid absolute paths in the file system!

The advantages of a library are relative paths. Files can be freely moved within the library and reorganized into subfolders with changed folder names, all links remain valid. This means that LPs can be passed on easily, e.g. to friends, students, family, etc. Everything that is in the folder or subfolders of the LP does not need an absolute path. USB sticks and external drives reference different drive letters on each system, with absolute paths linking would not work on other systems.

If the database is stored on a network server, e.g. \\HomeServer\Videos, absolute referencing is recommended. Fixed references are also applicable in CLOUDS. There you usually share one or a few files with a fixed reference.

However, HVi offers more!

It can be adapted to the complexities of various platforms and manages specific settings within each LP separately. Regular expressions are supported in the streaming settings, which can be used to define complex filter functions for detection.

HVi_tag

Freely definable additional information can be displayed for each video ID (*.mp4) below the video. This can be any text, GPS links, images or audio as well as ticker text (block elements). This data is automatically saved under Documents. HVi creates a user folder structure there. As soon as a known video ID appears in the input text field, it loads the saved content into the editing area of the HVi_tag.



When you click Play, the HTML file is generated and displayed in the web browser. All elements of the "tag" are added.

Tip

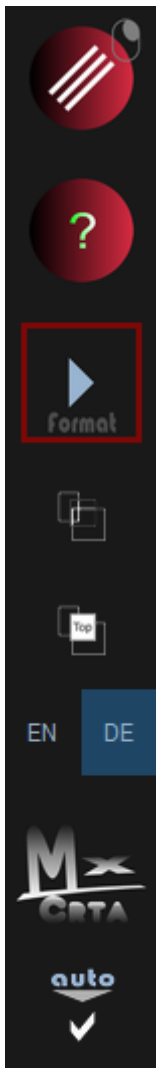
Make extensive use of the opportunity to transfer video URLs to HVi via the clipboard in detection mode! It efficiently takes care of copy-paste work for you. Under "Direct Links" you will find the text file "Intro_EN.txt" in which the options in combination with "**Clipboard Detection**" and "**AutoPlay**" are listed as examples for testing. GPS positions are also processed in detection mode.



That's all you need to know for now! As a Windows user you will have no problems finding your way around.

HVi is self explanatory - also with tooltips! Below you will find tabular listings and explanations of functions that HVi integrates.

Button bar



[Button]

Main menu

[Right mousekey]

Paths/Folders menu

[Button]

Help

Loads the help file into the reader

[Toggle button]

Video format (page size)

big/small

[Toggle button]

Window transparent

[Toggle button]

Window always on top

[Choice buttons]

Language

[Link button]

Show version information

[Options button]

Auto minimize when playing

Specific Keys & Mouse Mapping*

[Forward mouse button]

or/and

[Middle mousekey]

Program window normal / minimized
(Affects system-wide if activated under settings)

[Ctrl + forward mouse button]

or/and

[Ctrl + middle mouse button]

Show LP Editor / Main Window
(Affects system-wide if activated under settings)

[Strg + backward mouse button]

Show Play list
(Effects when program has focus)

[Alt + backward mouse button]

Show LP list
(Effects when program has focus)

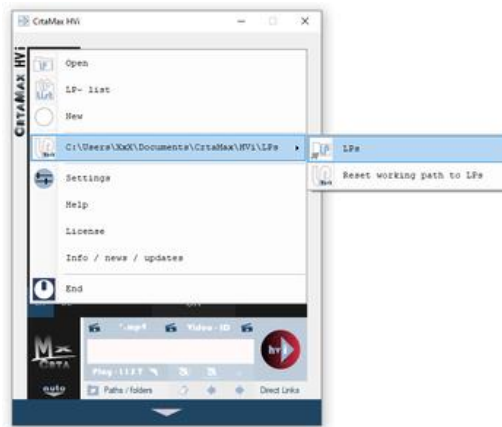
[Backward mouse button]

Show LP Editor / Main Window
(Effects when program has focus)

* otherwise the Windows standard key assignment works or as described in the "Tooltips".

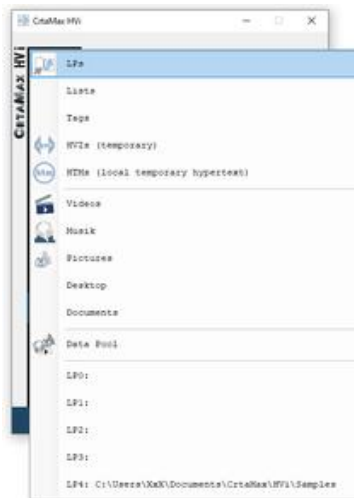
Main menu

The typical elements are housed in the main menu. The LP list (load list) offers a special feature. A working path is also managed.



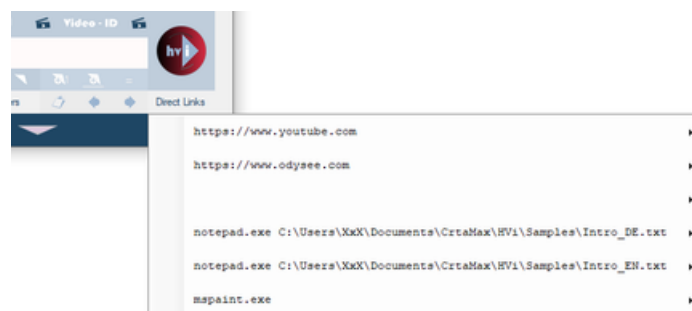
Paths & Folders menu

Paths and folders for quick access. All relevant paths can be reached with one click.



Direct Links menu

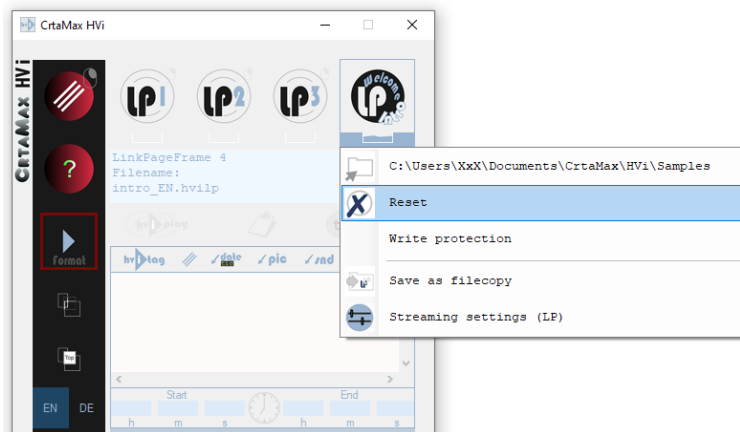
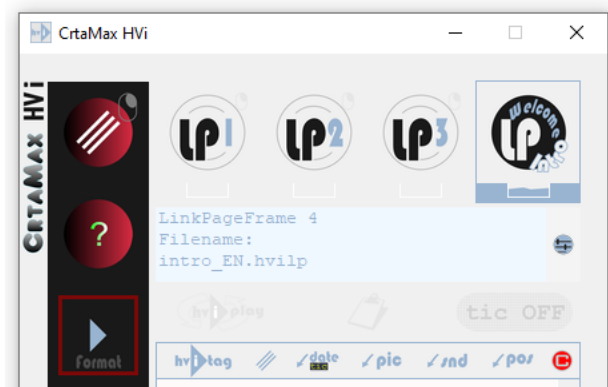
Define your “direct links” as you wish.



LinkPages (LPs) & frames

Frames and LPs 1-4 are the permanently visible management elements in the main window. An LP file (*.hvlp) is assigned to a frame by loading an existing LP from the file system into the frame. The icons indicate the status whether empty, with content or read-only. If you click on an empty LP, a new file "Noname" will be opened. Clicking on a frame sets it to "active". Black background means: "last opened". An active frame determines the 1. path that the library function uses when searching for files, i.e. the path where the LP is stored. Resetting a frame does not delete an LP file, it only resets the allocation. The frames manage settings for the LPs: position and size of the window, zoom, text position when exiting. The information is retained when HVi is restarted.

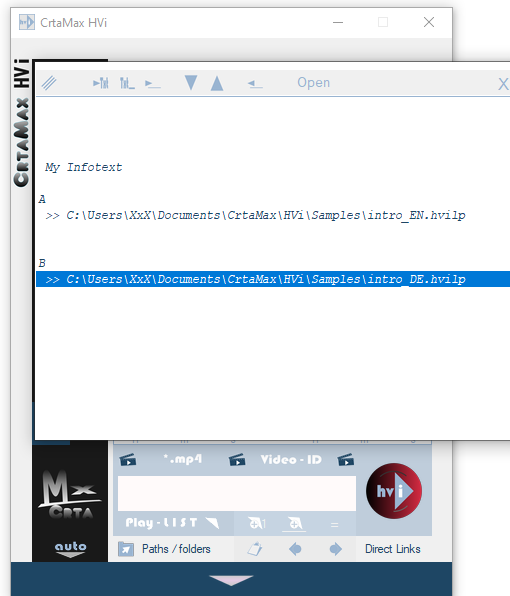
Dragged LPs are loaded into LPO, which is managed in the main menu, or if the file name extension (*.hvlp) is associated with HVi application, by clicking on the file in the Windows file explorer. Also file calls when HVi is pinned to the taskbar or start menu, which is highly recommended for use because of the practical file lists.



Call up the context menu with the right mouse button. Here the intro LP can be reset to use the frame for your purposes. The intro is stored under "\\Documents\Crtamax\HVi\Samples".

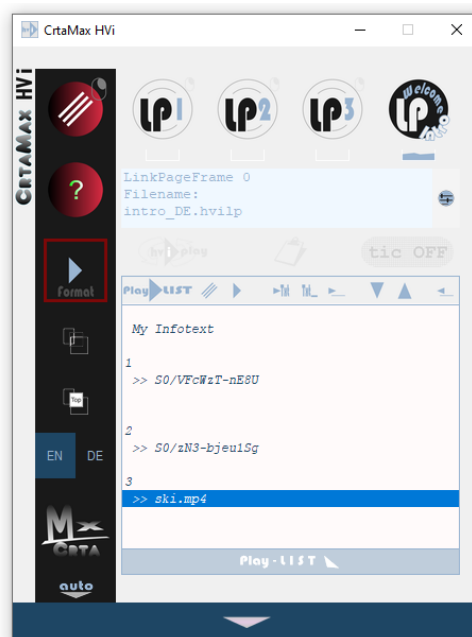
LP list (loading list)

Keep personal LP lists to have an overview - even with large databases. The LP list is useful when LPs are stored in network paths and on external media. Any notes are possible. Indexes A-Z or 0-9 are supported. If you press the B button, for example, the selection bar jumps to index B. Automatic addition can be switched on under settings when LPs are loaded. Only one entry is made per LP.



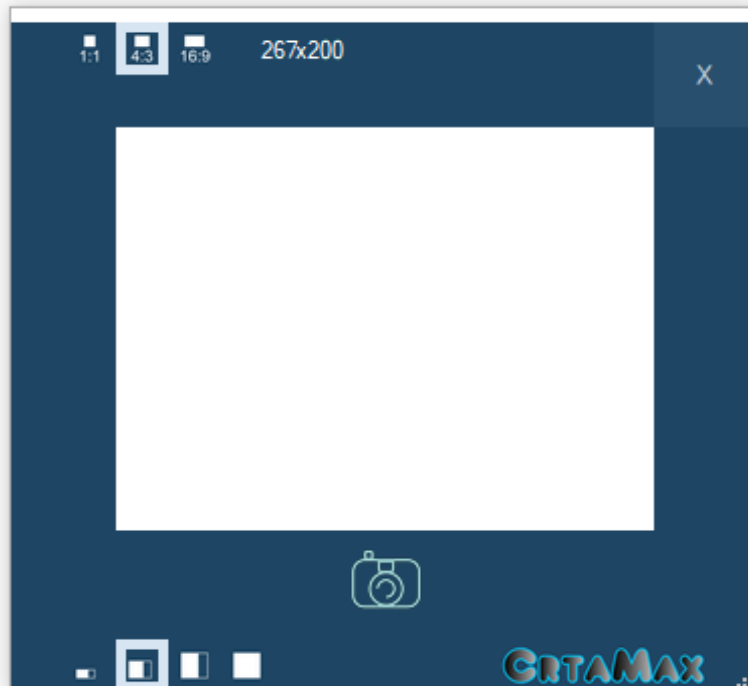
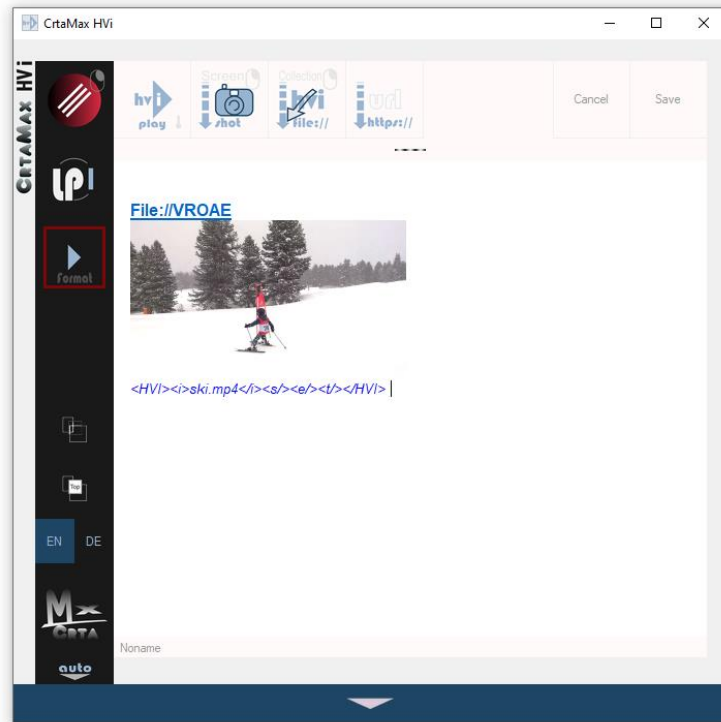
Play list

Maintain personal playlists to organize HVi's. Multiple selection and playback of all selected HVi's are supported. The option "automatic addition" when a video ID is detected can be selected. This gives you the history in list form of e.g. a video session on a popular video platform. Indexes and notes are also possible here.

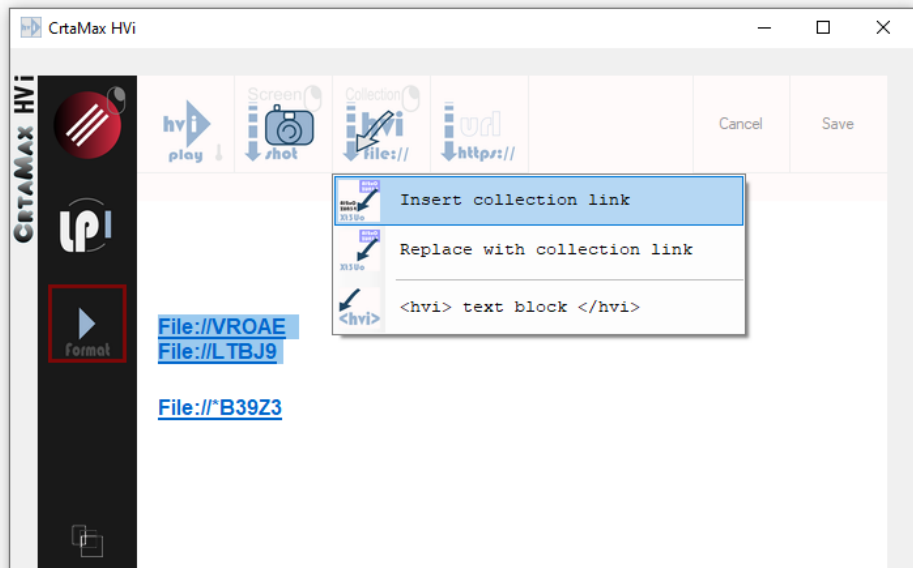


LP editor

Edit and view your LPs in the editor. The HVi_tags are inserted in the format File://F3TM3. This is where you design your LP arrangements with comments, thumbnails and links. Use the screenshot frame to take pictures of the videos. You can drag and drop saved images to specific positions in the LP editor. Text files, other LP files or (*.rtf) are also possible. (keyword: templates)

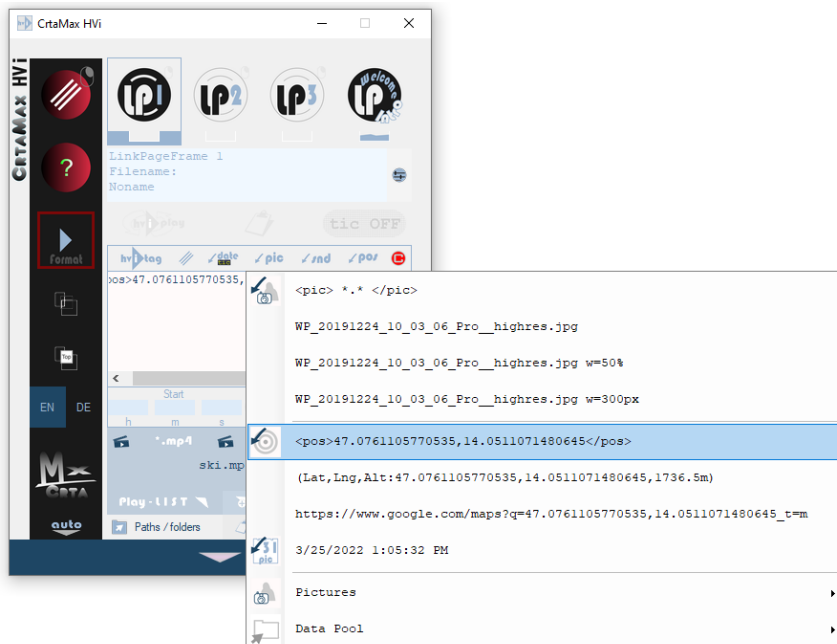


Mark several HVi links and create a collection. Such links, recognizable by "*", contain any number of HVIs, which are displayed one below the other in a tab of the web browser.



GPS data in photos is also recognized. Drag photos into the HVi window or use the import functions in the Pic menu. Block elements like: <pic> etc. can also be inserted into the LPs. An <HVI> block is the exchange format for simple text editors or e-mail programs.

When double-clicking on the block elements <pos> etc., its assigned functions are executed!

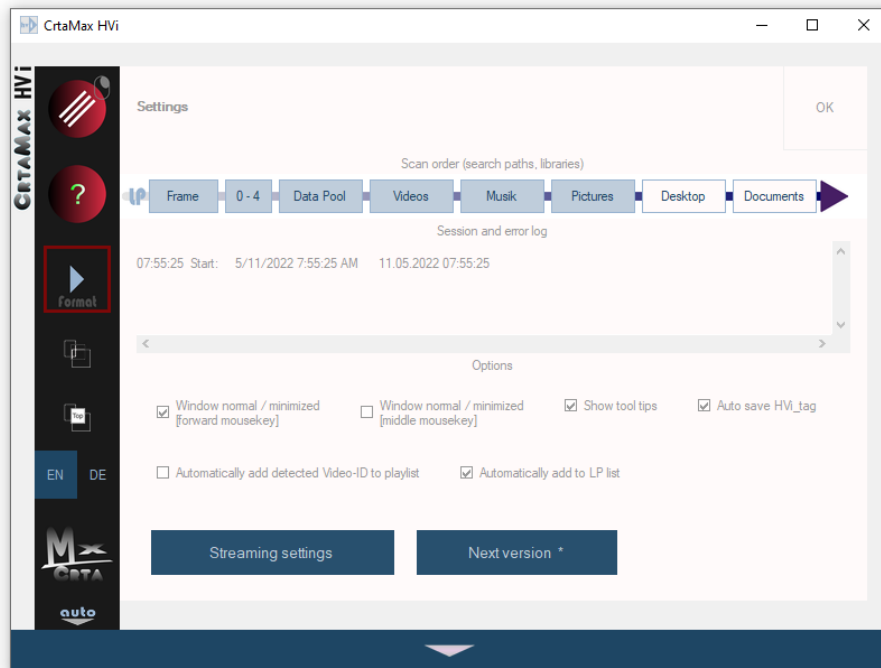


With a double click on e.g.: <tic> HyperVi </tic> the ticker is executed and the text is displayed in a running line.



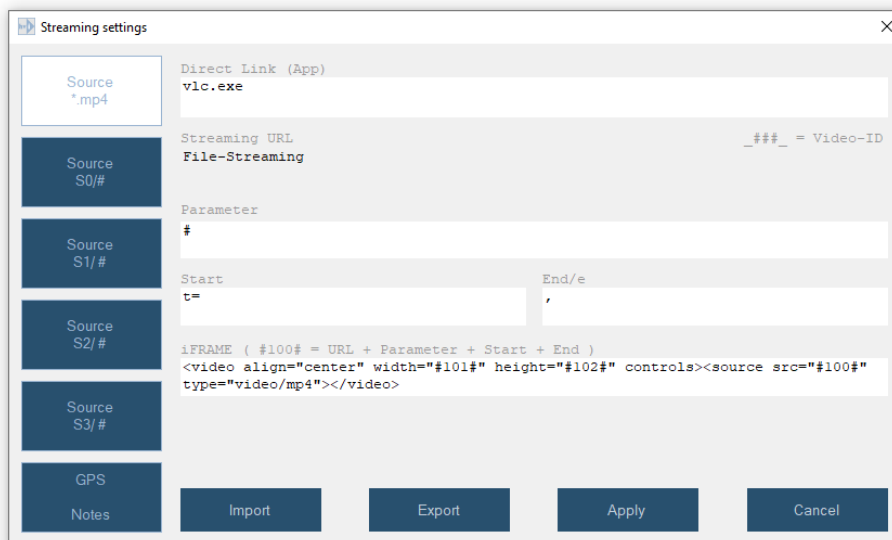
Settings

The session and error log documents error events that occur. The content of the log is not saved, remains temporarily in memory during runtime, but can be copied from the text field. Library: include folders and areas (frames 0-4) in the library - changes take effect immediately. Specific mouse functions and memory behavior can be activated/determined.

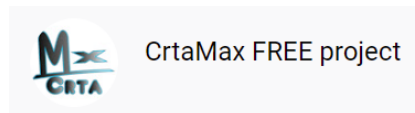


Streaming settings

Here you can specify the configurations for your data sources "*.mp4" and "S 0-3" as required. Experienced users among you can use the supplied settings file "Setting1.setstr" to derive the logic and define your own. Regular expressions enable complex filter functions for detecting video IDs from URLs.



Video quick guides



Channel

Short video tutorials of HVi and other CrtaMax applications are uploaded here as needed. Visit or subscribe to the channel and stay up to date.

Comment, discuss and share your experiences with other users!

Please understand if the author does not respond to all comments and questions. After all, he should continue to develop for you ☺ and he doesn't do it full-time!

Thank you for your trust

Max Crta (V.K-J)